



Fibaro Control of Systemline 7

Rev 1.0
14th August 2015

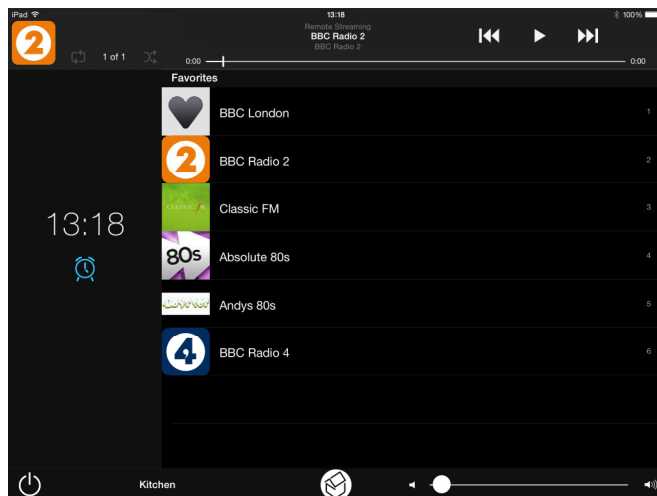
1.0 Introduction

The Fibaro Home Center 2 allows a Fibaro system to control S7 using a network connection. It is possible to configure the Home Center to control a number of Netamps via the Fibaro App or web page to select stored favourites, volume and inputs.

S7 has been designed so that other control systems such as Fibaro can connect to S7 and send some commands. All the control protocol to achieve this is published on the Systemline7 web page

<http://www.systemline.co.uk/systemline-help-and-support/>

It is important to configure the appropriate type of control at each device to give a simple and reliable end user experience. The Fibaro system can be configured to select stored favourites, volume control and inputs presented on a preformatted on a virtual keypad. Radio stations can be stored as Favourites on an S7 system with a server using the S7 App, and these are listed numerically on the App as shown below.



In order for the Fibaro system to select a favourite in a zone, it only needs to communicate with the Netamp controlling the zone, as long as it has software 0004-0011 or 0003-0008 or higher. Netamps with this software have commands to select stored favourites on the server. If the Netamp has lower software, then you should perform a software update from the internet.

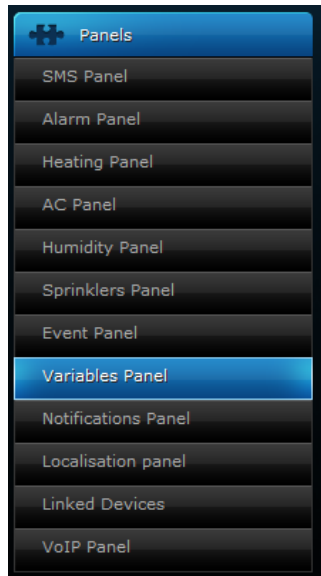
Favourites can also be playlists of music as stored by the end user, so the Fibaro S7 virtual device also includes play, stop, pause, and skip button functions.

A Fibaro virtual device file titled "Systemline-1.2.vfib" is available to download from the Systemline7 website downloads section. This already has a Netamp with the commands and responses entered for two zones.

2.0 Adding the Systemline virtual device

It is simple to add Systemline S7 control to a Home Center 2.

2.1 Open the Home Center 2 web configuration page and select 'Panels', then select the 'Variables Panel' option on the left



2.2 Add two variables for S7:

SystemlineCommand

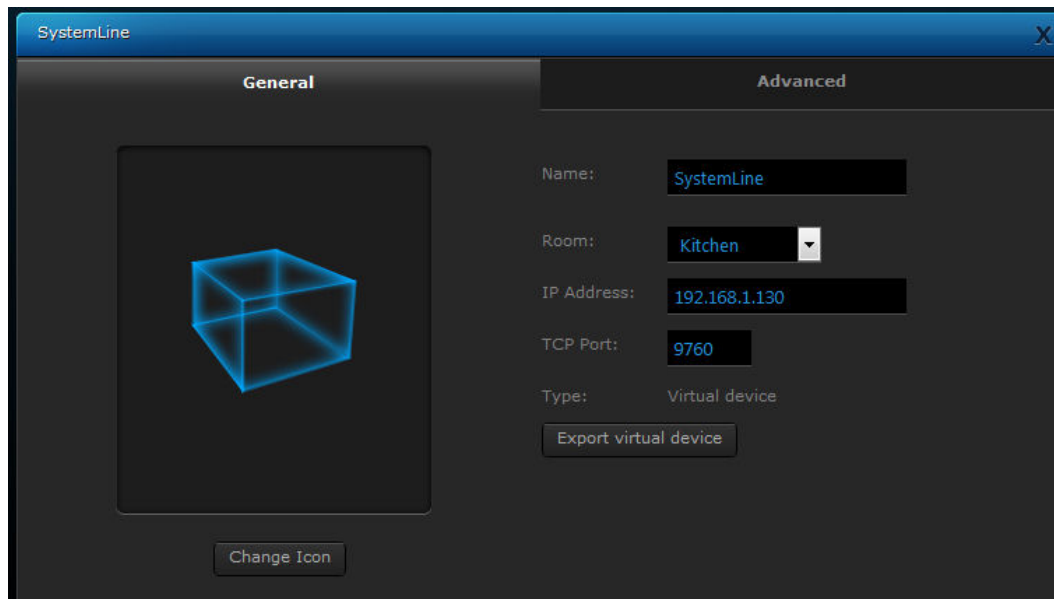
SystemlineNetAmp

Make sure you enter the text exactly with the right capital letters as the software is case sensitive.

2.3 Select 'Devices' and 'Add or remove device'

2.4 Import a virtual device, and browse to the 'Systemline-1.2.vfib' file and import.

2.5 Once imported you can configure the S7 device. You must put the IP address of the Netamp, you must have a fixed IP address configured for operation to be reliable. Set the name of this device and you can also allocate this to a particular room.



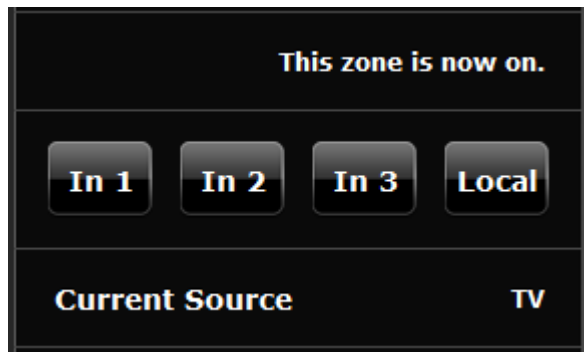
3.0 Using the S7 virtual device

You can use the virtual device to select inputs, favourites and volume control

3.1 Select the zone you would like to control, the control module should tell you the zone name which is provided by the Netamp.



3.2 You can manually select any of the three main or local inputs, the module should tell you the name of the source you have selected.



3.3 You can select a favourite by entering the favourite number and then press 'Fav'. The Netamp will switch on to source 3 and play the favourite.

3.4 If playing a playlist of music you can use the play, stop, pause and skip buttons.