



Systemline S7 NetAmp

RTI Driver User Guide

Version 1.1

Driver developed by



Introduction

This driver has been designed to provide two-way control of a Systemline S7 NetAmp, via TCP/IP.

This driver has been written and tested using a Systemline S7 NetAmp running the following software:

- Web Page Version: 0003-0004
- Bootloader Version: 20.10.14.01
- Firmware Version: 0003-0004

Driver release version: 1.1

Systemline Configuration

It is recommended that the Systemline S7 system be installed, configured and tested by a suitably qualified engineer, according to Systemline documentation, prior to integration with this driver. Some additional, specific configuration is required to ensure correct operation of the driver.

The NetAmp should be configured with a static IP address in the same range as the RTI processor:

1. Enter the IP address of the NetAmp into the web browser of a computer connected to the same network, to display the web interface.
2. Choose the **Network Setup** tab.
3. Enter the username and password when prompted (by default these are *admin / password*).
4. Enter your static IP address information and click **Save**.

Driver Installation & Configuration

Open your RTI Integration Designer system file (or use the demo programming file entitled "Systemline7.rti"). Select your XP series processor from the **System Workplace** window and choose the **Drivers** tab.

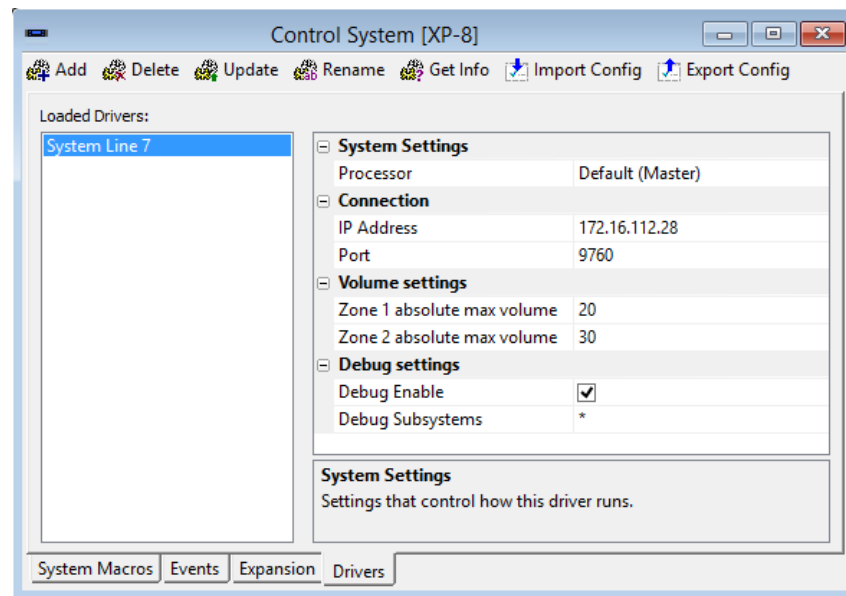


Figure 1: Driver Properties

If the "System Line 7" driver does not appear in the **Loaded Drivers** list, select **Add** and choose to open the "SystemLine7.rtidriver" file from the driver package. The driver features a number of configuration properties that must first be complete:

Setting	Description
System Settings	Processor - the XP-series processor running the driver.
Connection	IP Address - The IP address on the LAN for the NetAmp. Port - The port number used to communicate with the NetAmp (by default this is "9760").
Volume Settings	Zone 1 absolute max volume - the maximum volume allowed for Zone 1 (0-30). Zone 2 absolute max volume - the maximum volume allowed for Zone 2 (0-30).
Debug Settings	Debug Enable - support use only Debug Subsystems - support use only

Table 1: Driver Properties

Driver Commands

The driver features a number of commands used for control. To add a command:

- Choose your remote control device from the **System Workplace** window, right click on the button to which a command is to be added and select **Edit Properties**.
- Select the **Driver Command** tab and click the arrow button to display the available commands for the driver.
- Choose a command and click **Ok**.

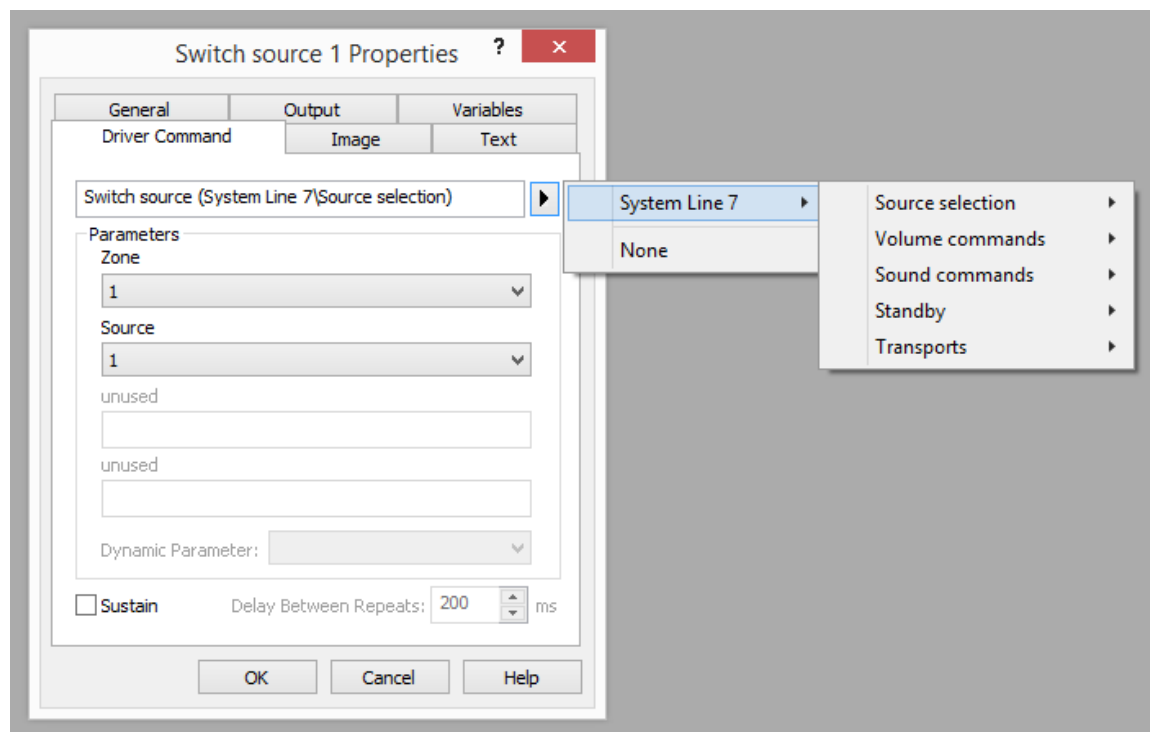


Figure 2: Driver Commands

Command	Description
Switch Source	Switch a zone to use a particular source.
Switch local source	Configure the local source for either zone to use digital, analogue or automatic.
Select Favourite	Choose to play a favourite on a particular zone.
Adjust volume	Raise or lower the volume for a specific zone. Note: this is disabled in High Volume Mode.
Mute	Toggle, or discretely switch Mute on or off for a specific zone.
Set Volume	Using a value between 1 and 30, specify a volume level for a particular zone. Note: this is disabled in High Volume Mode.
Adjust bass	Raise or lower base for a specified zone.
Set bass	Set bass level for a specified zone (-7 to 7).
Adjust treble	Raise or lower treble for a specified zone.
Set treble	Set treble level for a specified zone (-7 to 7).
Adjust balance	Adjust balance left or right for a specified zone.
Set balance	Set balance for a specified zone (range = -15 to 15, where -15 to -1 = left, 1-15 = right and 0 = center).
Standby	Enter, exit or toggle Standby for a specified zone.
Play	Begin playback on a specified zone
Stop	Stop playback on a specified zone
Pause	Pause playback on a specified zone
Skip	Skip forward or backward on a specified zone
Repeat	Enable, disable or toggle repeat for a specified zone
Random	Enable, disable or toggle random for a specified zone

Table 2: Driver Commands

Driver Variables

The driver features a number of variables, providing feedback from the system. The following variables are available for both zones:

Variable	Description
Connection Status	The current status of the connection between the driver and the NetAmp
Zone name	The name of the zone
Source name 1	The name of source 1
Source name 2	The name of source 2
Source name 3	The name of source 3
Local source name	The local source (4) name
Current source	The currently selected source as a value (1-4, where 4 is the local source)
Current source name	The source name corresponding to the "Current Source" variable
Current local source	The current local source configuration as a value (1=automatic, 2=digital, 3=analogue)
Volume	The current volume level
Mute	A Boolean variable showing whether mute is currently enabled or disabled
Bass	The current bass level
Treble	The current treble level
Balance	The current balance level
High Volume Mode Active	A Boolean variable showing whether High Volume Mode is enabled
Standby Mode	The current Standby status

Table 3: Driver Variables